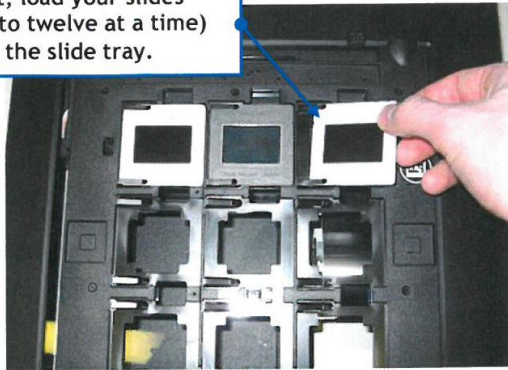


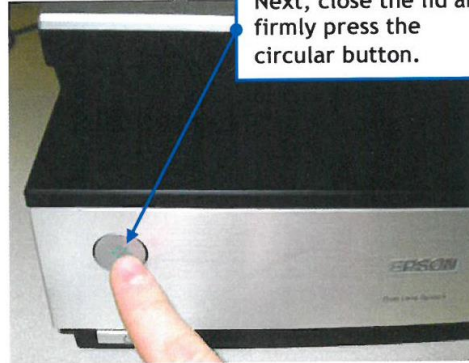
Scanning Slides Using the Epson Perfection V700

STEP 1: Loading and Activating the Scanner

First, load your slides (up to twelve at a time) into the slide tray.



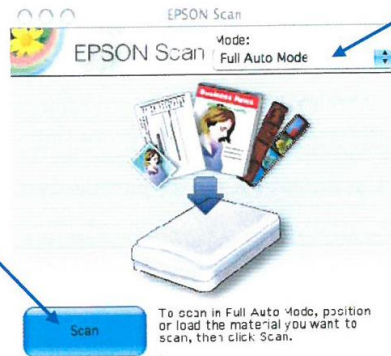
Next, close the lid and firmly press the circular button.



Wait a minute, and the EPSON Scan menu will appear. If the scan begins automatically, skip to step three.

STEP 2: Starting the Scan

Make sure the Mode drop-down menu has "Full Auto Mode" selected.



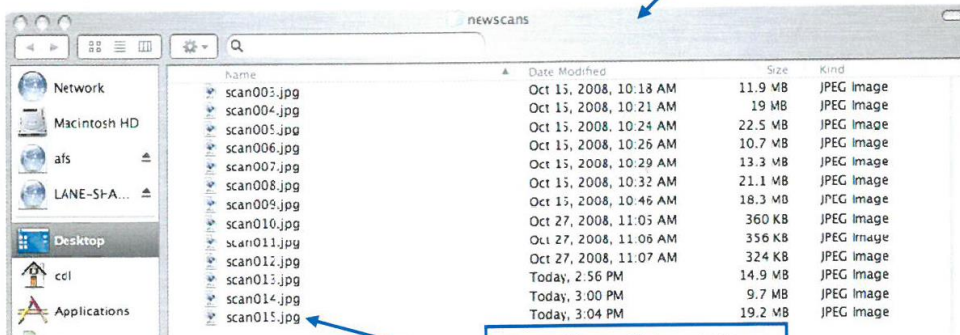
Click "Scan."

Scan

To scan in Full Auto Mode, position or load the material you want to scan, then click Scan.

Once the scan has completed, your images will be saved to the "newscans" folder on the desktop.

STEP 3: Retrieving your Files



Your files will be at the bottom of the list.